



# ACT Infrastructure Plan Update

# Education



**BUILT  
FOR  
CBR**





Artist Impression;  
CIT Woden Campus redevelopment

# Contents

Building today to transform tomorrow	2
ACT Infrastructure Plan	4
Approach to updating the Plan	5
Education in the ACT	7
Indicative Project Pipeline	10
Drivers of infrastructure investment	21
Key Priorities – School Education	41
Key Priorities – Vocational and Higher Education	44
Our progress since 2019	50



## Acknowledgement of Country

We acknowledge the Ngunnawal people as traditional custodians of the ACT and recognise any other people or families with connection to the lands of the ACT and region. We acknowledge and respect their continuing culture and the contribution they make to the life of this city and this region.

# Building today to transform tomorrow

The ACT Infrastructure Plan sets out a long-term vision to build Canberra's future. The Plan outlines the ACT Government's delivery of infrastructure that is built for Canberra, to ensure that we continue to be one of the most liveable cities in Australia and the world.

The Government's education infrastructure plan update outlines more than a billion dollars in new and renewed public education and training facilities. As Canberra continues to grow, these education facilities will support all Canberrans to access inclusive, high-quality public education close to where they live.

The plans we make today will transform our city for tomorrow.

**Andrew Barr MLA**  
Chief Minister



# The update of the ACT Infrastructure Plan reflects the government's commitment to delivering the infrastructure required to support a growing city.

The ACT has experienced the fastest growing population of any Australian jurisdiction over the last 10 years, growing from 370,000 to 455,000 people. The Territory is expected to reach half a million residents by 2027.

As Canberra's population grows, the government will invest in enabling infrastructure and seek to drive private sector investment into our renewal precincts, as well as new housing and commercial opportunities.

Infrastructure investment has continued to create local jobs during the tough economic conditions faced in recent years. It has contributed to the government achieving its target of 250,000 jobs by 2025 ahead of schedule.

The Plan outlines how the government is preparing for the delivery of new and improved infrastructure across the city for the next 5 years and beyond. The infrastructure priorities identified in this plan are informed by the best information we have now, including population and enrolment projections. As we move beyond the next 5 years, these priorities and investment decisions will be informed by changes in circumstances as our city and priorities evolve. Through careful planning now, the government will be able to continue to invest, at the right time, to maintain Canberra's liveability.

The update to the ACT Infrastructure Plan will be released progressively for 7 sectors.

## The sectors are:



### City Services, Recreation and Community Facilities:

Public recreation spaces, emergency services, corrections infrastructure, public amenity, community facilities, urban forest, cemeteries and crematoria.



### Climate Action, Energy and Environment:

Electricity, batteries, electric vehicle infrastructure, parks and conservation, waterways, waste management and recycling, water and water management including stormwater.



### Education:

Primary and secondary schools, early childhood facilities, tertiary, vocational and specialist facilities as well as upgrades.



### Entertainment, Arts and Sports:

Community sports, community arts and key entertainment and sports venues.



### Health:

Hospitals, walk-in centres, community health centres.



### Housing, Land Release and City Planning:

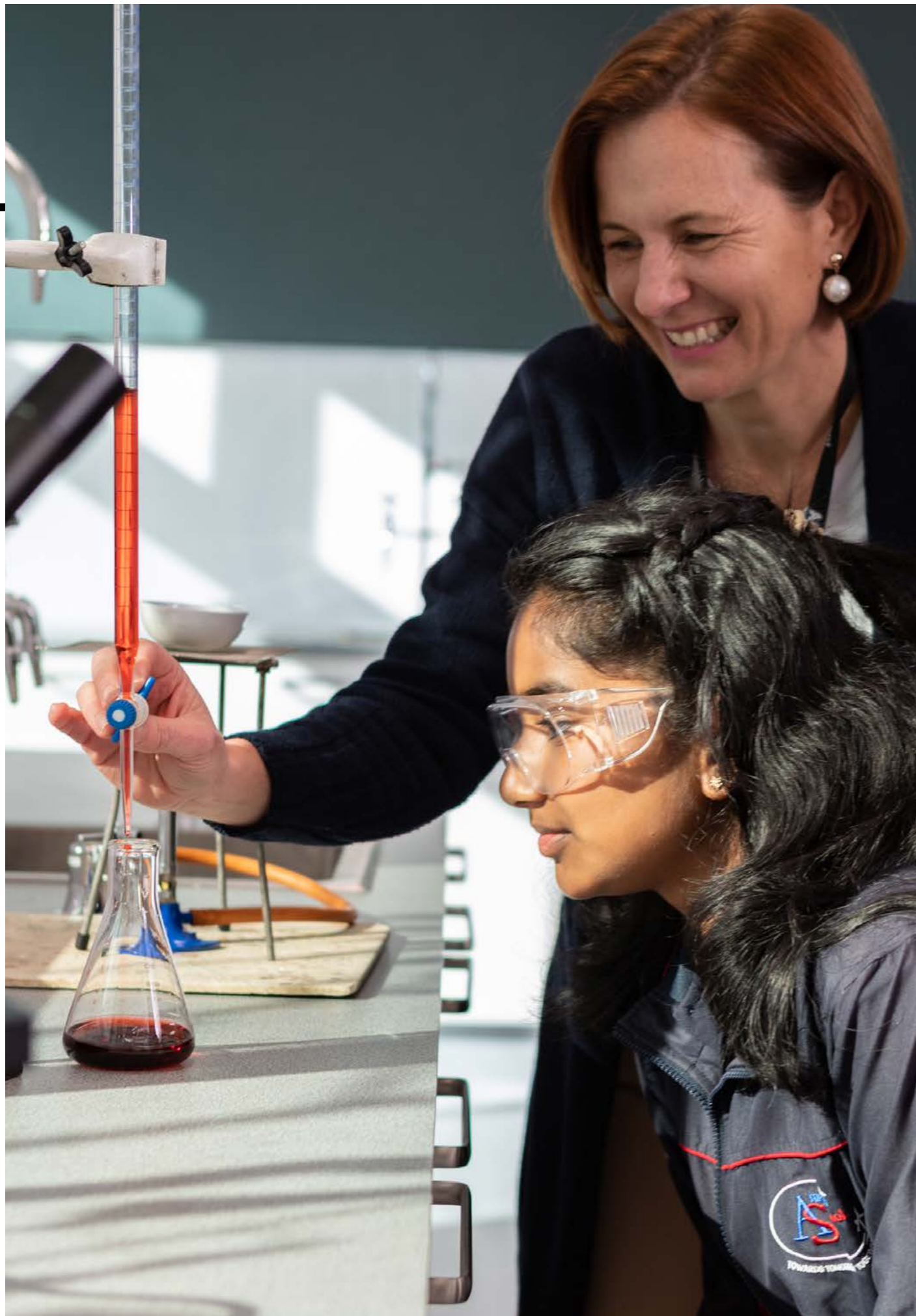
Public housing, land release and development.



### Transport:

Roads, bridges, public transport, and active travel

This *Education Sector* update replaces the Education sector in the 2019 Infrastructure Plan.



## Investing in Canberra's education system supports all Canberrans to reach their full potential.

As the Territory continues to grow, the ACT Government is building new public schools and upgrading education facilities to support all Canberrans to access inclusive, high-quality education close to where they live. This investment also strengthens the growth of the ACT's knowledge economy.

The ACT Government is committed to supporting lifelong education and skills for our community. Our approach is guided by the following strategies:

- *Set up for Success: An Early Childhood Strategy for the ACT and the Future of Education Strategy* recognise that genuine equity of opportunity is only delivered through consistent and sustained collaborative effort, working with key partners from the earliest years of a child's educational journey. An Inclusive Education Strategy is being developed under the Future of Education Strategy.
- *Skilled to Succeed* outlines the ACT's priorities and plans for developing the workforce of the future, equipping Canberrans with the right skills for in-demand jobs.

Key to our educational aspirations is ensuring we continue to provide high-quality, inclusive teaching and learning spaces across all our early childhood education and care services, schools and tertiary institutions. The ACT Government is continuing to build, upgrade and expand public schools right across the ACT to ensure that every child has access to the modern, accessible and sustainable school infrastructure and facilities that support high-quality education. Comprehensive forward planning ensures schools are easy to get to, well-designed, sustainable, safe and inclusive.

As the Territory's population increases, the ACT Government will continue to monitor and plan for future demand and capacity across the Territory in the ACT's early childhood education and care facilities, primary and high schools, and colleges.

School infrastructure plays a key role in the provision of wraparound services for families, such as co-located early childhood education and care and out of school hours care services. This contributes to a liveable, active and engaging city by providing shared community and recreational facilities outside of school hours. This can range from playgrounds and bike tracks to sports fields and community meeting spaces.

Every ACT child from kindergarten to Year 12 is guaranteed a place at their local public school. Recognising the significance of the early years to a child's learning and development, the ACT Government is also prioritising access to affordable, high-quality early childhood education and care for all families. All 4-year-old children are guaranteed a place in a public preschool, and from the start of 2024, all Canberra families will be able to access one day per week of free 3-year-old preschool in early childhood education and care services. We are committed to creating a future of education where children and young people with disability are included, welcomed, and can access education and out of school hours care on the same basis as their peers.

## **This update to the ACT Infrastructure Plan outlines the key drivers of infrastructure investment and the refreshed indicative priority projects for the ACT education sector at both a local and Territory level.**

It acknowledges that priorities and investment decisions may change over time with changing circumstances, and highlights the importance of early planning to support the delivery of infrastructure in time to meet demand. This is particularly important in the context of a growing population and the current global and local market challenges. The Plan also provides a status update on indicative priority projects captured in the 2019 Infrastructure Plan.



## Indicative Project Pipeline

The priorities identified beyond the current budget are indicative and may change in response to community preferences, shifts in demand for services and the availability of funding. The government is committed

to delivering our investment program sustainably by maintaining a balanced budget over the medium term, and leveraging partnerships with other governments and the private sector where there are opportunities to do so.

Project	Estimated total cost (\$m)	Funding considered				Description
		0-5 years	5-10 years	10-15 years	15-20+ years	
<b>School Infrastructure</b>						
<b>Whole of Canberra</b>						
<b>New, expanded and modernised public schools</b>	500+					<p>The ACT Government is continuing to build, upgrade and expand public schools right across ACT to ensure that every child has access to the modern, accessible and sustainable school infrastructure and facilities that support high-quality education. Comprehensive forward planning ensures schools are easy to get to, well-designed, sustainable, safe and inclusive.</p> <p>As the Territory's population increases, the ACT Government will continue to monitor and plan for future demand and capacity across the Territory in the ACT's early childhood education and care facilities, primary and high schools, and colleges.</p>
<b>Public School Infrastructure Renewal Program</b>	50-100					<p>The ACT Government has committed \$99.4 million to renewing and upgrading public schools across the Territory through the annual Public School Infrastructure Renewal Program. These works ensure every child has access to modern, accessible and sustainable school infrastructure and facilities that support high-quality education.</p>
<b>Roof Replacement Program</b>	<50					<p>The ACT Government has invested \$21.8 million to replace roofs at Dickson College, Melba Copland Secondary School (both campuses), Latham Primary School, Gowrie Primary School, Red Hill Primary School, and Telopea Park School. Works have commenced at Dickson College and Melba Copland Secondary School's college campus.</p>

Project	Estimated total cost (\$m)	Funding considered				Description
		0-5 years	5-10 years	10-15 years	15-20+ years	
<b>Hazardous Materials Removal Program</b>	<50					<p>To ensure our schools remain safe environments for the community, the ACT Government has invested \$15.0 million in funding to accelerate the removal of hazardous materials across ACT public schools. This is in addition to the Public School Infrastructure Renewal program, and regular repair and maintenance work which also provides an opportunity to manage these materials. Affected school communities continue to be notified of all hazardous materials works through school websites and communications channels.</p>
<b>Inclusive education infrastructure</b>	<50					<p>The ACT Government is committed to ensuring all new public school builds and upgrades are inclusive, and reflect the principles of equity, universality and non-discrimination.</p> <p>The ACT Government continues to improve the accessibility of infrastructure across ACT public schools. \$4.1 million was allocated in the 2022-23 Budget for accessibility upgrades across public schools, with further funding for accessibility works included in a range of individual projects, as well as \$1.0 million through the 2023-24 Budget to undertake feasibility studies and plan for future school needs.</p> <p>Further planning over the medium term will inform delivery of new and updated inclusive education infrastructure in schools to ensure educational facilities keep pace with the inclusive education needs of students with disability across Canberra.</p>
<b>Belconnen</b>	<i>Belconnen is forecast to experience strong school-aged population growth driven primarily by greenfield developments, including in West Belconnen. New and expanded school capacity is the focus in this District.</i>					
<b>Upgrades to Cranleigh School</b>	<10					<p>The ACT Government will deliver infrastructure upgrades at Cranleigh School to ensure infrastructure meets modern standards for specialist education and supports modern teaching and learning practices.</p>

Project	Estimated total cost (\$m)	Funding considered				Description
		0-5 years	5-10 years	10-15 years	15-20+ years	
<b>A new Early Childhood Education and Care centre to Year 6 primary school in Strathnairn</b>	50-100					<p>The ACT Government is investing \$62.4 million to deliver a new early childhood education and care - Year 6 primary school in Strathnairn with an inclusive and modern school build. It will be the first school in the Ginninderry area and will cater for over 780 preschool to Year 6 students, as well as a 130 place early childhood education and care service. The school will provide community facilities accessible to the community outside of school hours.</p> <p>The ACT Government has also provided \$85.7 million in additional funding in the 2023-24 Budget across Garran Primary School, Strathnairn Primary School and North Gungahlin High School construction projects.</p>
<b>Expansion of school capacity in Belconnen</b>	Refer to 'New, expanded and modernised ACT schools'					<p>The population of west Belconnen is expected to grow by almost 10,000 residents in the 10 years from 2030 to 2040. The central Belconnen district, including the town centre, is also forecast to grow over the next decade. Additional primary and high school places may be required to meet demand as the population grows and new suburbs come online.</p> <p>While the current public school capacity is sufficient to accommodate students in the district, population growth and residential development continues to be monitored to assess if investment into new capacity (through either a new school or school expansions) is required to meet demand, as well as ongoing land planning and feasibility work for potential future public education land and infrastructure.</p> <p>The ACT Government has also committed \$500,000 in the 2023-24 Budget for feasibility and early planning work to investigate the potential future modernisation of Fraser Primary School. Modernisation would improve amenity and create new permanent learning spaces and contemporary classrooms. It would also consider out of school hours care to meet community need.</p> <p>The ACT Government is aware of the Commonwealth Government intent to divest land on the Barton Highway in the Ginninderra east region of Canberra for future residential development. If this progresses, new primary schools and a high school may be required in these future suburbs of Belconnen.</p>

Project	Estimated total cost (\$m)	Funding considered				Description
		0-5 years	5-10 years	10-15 years	15-20+ years	
<b>Gungahlin</b>	<i>Gungahlin school-aged population is expected to experience strong growth, though lower compared to the more recent past. New and expanded school capacity is the focus in this District</i>					
<b>Expansion of school capacity in Gungahlin</b>	Refer to 'New, expanded and modernised ACT schools'					<p>Additional school capacity may be required to meet demand for public schooling emerging from the establishment of new suburbs, population growth and urban densification in the central Gungahlin district. The ACT Government will continue to monitor population growth and anticipate the needs of the district throughout this decade and beyond.</p>
<b>Shirley Smith High School</b>	50-100					<p>Construction is underway on the new Shirley Smith High School in Kenny, with the school set to open in 2024. The ACT Government has invested \$85.9 million to deliver this new high school which will cater for up to 800 students in Years 7 to 10. The new school will have modern teaching and learning environments and deliver new community facilities accessible to the community outside of school hours, including: a double gymnasium with basketball, netball, futsal and volleyball markings; 3 external hard courts suitable for basketball and netball; a grassed sports field; and a performance arts space.</p>
<b>A new high school in North Gungahlin</b>	100-250					<p>Construction is currently underway to deliver a new high school for North Gungahlin, situated in Taylor, adjacent to Margaret Hendry School. The ACT Government has invested \$132.8 million in combined funding to deliver this project and the recently completed Margaret Hendry School expansion. The new high school is set to open in 2025 and will provide general and specialist learning areas as well as a range of sporting, recreational and community use facilities including: a double gymnasium with basketball, netball, futsal and volleyball markings; two multi purpose spaces within the gymnasium building; external hard courts suitable for basketball and netball; as well as external fitness equipment.</p> <p>The ACT Government has also provided \$85.7 million in additional funding in the 2023-24 Budget across Garran Primary School, Strathnairn Primary School and North Gungahlin High School construction projects.</p>



Project	Estimated total cost (\$m)	Funding considered				Description
		0-5 years	5-10 years	10-15 years	15-20+ years	
<b>A new college in North Gungahlin</b>	100-250					Planning and design has commenced for a new second college in Gungahlin, to be open by the end of the decade. The ACT Government is investing \$114.1 million to build the new college which will be located to the north of the existing Gold Creek High School in Nicholls. The second college in Gungahlin will have an initial capacity for up to 800 students, with capacity for future expansion to up to 1,100 students.
<b>Inner North and City</b>		<i>Inner North and City school-aged population is expected to grow due to greater densification and urban renewal, therefore the focus is on modernisation and expanded school capacity.</i>				
<b>Modernisation and expansion of Majura Primary School</b>	<50					The ACT Government has committed \$39.3 million to modernise and expand Majura Primary School, which will increase the school's capacity by up to 300 places to respond to enrolment growth in the Inner North. Design work for the modernisation has commenced, and the works will include both new and upgraded school facilities, including a new gym.
<b>Modernisation and expansion of North Ainslie Primary School</b>	<50					Planning and design work is underway for the modernisation of North Ainslie Primary School, supported by \$1.0 million through the 2023-24 ACT Budget and previous years' funding for feasibility studies and master planning. Modernisation of North Ainslie would provide high-quality teaching and learning facilities, including specialist subject learning settings and a provision for out of hours school care services to meet community need. Design will also plan for a range of sporting and recreational facilities for school and community use.
<b>Expansion of school capacity in the Inner North and City</b>	Refer to 'New, expanded and modernised ACT schools'					North Canberra is forecast to experience an increase of school-aged children living in this district across the next 10 to 20 year period. Increased residential development and population growth is anticipated to occur across both the upper and the lower ends of North Canberra, including in and around Civic and Parkes. If population increases occur in line with projections, additional investment in primary and high school capacity may be required to meet demand. The expansion and modernisation of established schools may also be required, to continue to meet demand and ensure modern, safe and inclusive teaching and learning facilities.

Project	Estimated total cost (\$m)	Funding considered				Description
		0-5 years	5-10 years	10-15 years	15-20+ years	
<b>Modernisation of Narrabundah College</b>	100-250					The ACT Government has committed \$32.5 million for Stage 1 of the modernisation to Narrabundah College, redeveloping and replacing ageing infrastructure with contemporary learning environments and facilities. Development of the master plan is underway, with the modernisation to be undertaken in multiple construction stages sequenced over the next 5 to 10 years to allow the College to continue operations.
<b>Upgrades to Black Mountain School</b>	<10					The ACT Government will deliver infrastructure upgrades at Black Mountain School to ensure infrastructure meets modern standards for specialist education and supports modern teaching and learning practices.
<b>Inner South</b>		<i>Inner South school-aged population is expected to grow due to greater densification and urban renewal, therefore the focus is on modernisation and expanded school capacity.</i>				
<b>Expansion of school capacity in the Inner South</b>	Refer to 'New, expanded and modernised ACT schools'					Urban infill and residential development in the Inner South are resulting in population growth and increased numbers of school-aged children seeking places in public schools. Ongoing monitoring will determine if additional investment in capacity is required to meet any anticipated increase in public school demand. Modernisation of primary schools in the Inner South is anticipated in the next 10 to 20 years to meet continued demand and provide modern teaching and learning facilities.  The ACT Government has committed \$500,000 through the 2023-24 Budget to undertake planning and detailed design work for a potential future 250 place expansion and modernisation of Forrest Primary School, to meet demand in the Inner South.
<b>Expansion and modernisation of Telopea Park School</b>	<50					Population growth and residential development in the Inner South is increasing pressure on high school capacity. The ACT Government has committed \$47.3 million in the 2023-24 Budget to modernise and expand the high school facilities at Telopea Park School, which will increase the school's permanent capacity by 500 places. As part of the expansion, a new flexible learning community is planned which will include general and specialist learning spaces. Completion of the expansion project is anticipated during the 2027 school year.

Project	Estimated total cost (\$m)	Funding considered				Description
		0-5 years	5-10 years	10-15 years	15-20+ years	
<b>Molonglo Valley, Weston Creek &amp; Woden</b>		<i>Molonglo Valley school-aged population is expected to experience the highest and most rapid growth of all districts and the focus is on building new schools in greenfield sites. Weston Creek school-aged population is expected to be stable, while Woden school-aged population is expected to grow, for this area the focus is on modernisation and expanded school capacity.</i>				
<b>A new Early Childhood Education and Care centre to Year 6 primary school in Whitlam</b>	50-100	█				The ACT Government has invested \$76.8 million to construct a new early childhood education and care to Year 6 primary school in Whitlam. The early childhood education and care service will have 130 places and the primary school will have capacity for up to 780 students, with the capacity to add up to an additional 200 places in future. The school is in the early design phase and expected to open for the 2026 school year.
<b>A new college in Molonglo Group Centre</b>	100-250	█				The ACT Government has provided \$3.0 million to progress planning and design works for a college in the Molonglo Group Centre. The college will be designed with a focus on sustainability and inclusion, and the community will also benefit from new facilities available to the community outside of school hours.
<b>A new high school in Molonglo Group Centre</b>	50-100	█				A new high school in the Molonglo Group Centre is in the planning stages, with funding and timing subject to future Budget decisions. Early planning indicates the new high school may be co-located on the same campus with the Molonglo Group Centre college.
<b>Expansion of school capacity in the Molonglo Valley</b>	Refer to 'New, expanded and modernised ACT schools'	█				Molonglo Valley is anticipated to continue growing strongly across the next few decades. New primary and high schools may be required between 2030 and 2040, with land planning underway across the ACT Government. Additional investment into school capacity may be required beyond 2040 as residential development and population growth are projected to increase in this new area of Canberra.

Project	Estimated total cost (\$m)	Funding considered				Description
		0-5 years	5-10 years	10-15 years	15-20+ years	
<b>Refurbishment of the Hedley Beare Centre for Teaching and Learning in Weston Creek</b>	<50		█			The Hedley Beare Centre for Teaching and Learning provides critical training facilities for the professional development of teachers and accommodation for Education Support Office staff. A master plan has been developed for the site to modernise the facilities and provide additional capacity.
<b>Expansion of school capacity in Weston Creek</b>	Refer to 'New, expanded and modernised ACT schools'	█				Additional investment into school capacity in Weston Creek may be required beyond 2040. The ACT Government will continue to monitor population growth and anticipate the needs of the district throughout this decade and beyond.
<b>Expansion of school capacity in Woden</b>	Refer to 'New, expanded and modernised ACT schools'	█				Expansion and modernisation of school capacity in Woden may be considered in the medium to long term, in response to anticipated growth and urban renewal along transport corridors, and to meet increasing school demand beyond this decade. The former CIT site in Woden has been identified for a future public high school.
<b>Expansion and modernisation of Garran Primary School in Woden</b>	50-100	█				The ACT Government is investing \$62.4 million to expand and modernise Garran Primary School, increasing the capacity of the school to up to 975 students. The modernisation will include upgrades to the general and specialist subject learning areas, a new library, gymnasium and hard courts, as well as increased parking spaces and other general amenities for staff and students. The expansion will include increased provision for out of hours school care and facilities for community use outside of school hours.  The ACT Government has also provided \$85.7 Million in additional funding in the 2023-24 Budget across Garran Primary School, Strathnairn Primary School and North Gungahlin High School construction projects.

Project	Estimated total cost (\$m)	Funding considered				Description
		0-5 years	5-10 years	10-15 years	15-20+ years	
<b>Tuggeranong</b>		<i>Tuggeranong school-aged population is expected to experience limited growth and Education is focusing on modernisation and upgrades to the district's existing older schools.</i>				
<b>Modernisation of Tuggeranong schools</b>	Refer to 'New, expanded and modernised ACT schools'					With limited growth in enrolments forecast in the Tuggeranong district in the medium term, the ACT Government will continue to modernise and upgrade existing and older schools in the next 10 to 30 years. Modernisation may include primary schools, high schools and Erindale College. Depending on population growth and demand, additional future primary school places may be required in the long term.
<b>Upgrades to Calwell High School</b>	<10					The ACT Government committed \$3.0 million in the 2023-24 ACT Budget to upgrade Calwell High School. The upgrades will include the modernisation of teaching and learning spaces and new bathrooms. Circulation spaces will also be upgraded to encourage student learning and collaboration. These works build on infrastructure improvements currently progressing at Calwell High School, including upgrades to the science labs and front entrance.

### Vocational and higher education infrastructure

<b>CIT Woden Campus and a new CIT Yurauna at Bruce</b>	250-500					<p>The ACT Government is investing \$325.1 million to build a contemporary and sustainable CIT campus in the heart of Woden which will support up to 6,500 students to learn each year. A Youth Foyer will be delivered within the campus precinct to support vulnerable young people and provide accommodation, support services and opportunities to pursue education and training all in one location.</p> <p>It will be complemented by a new public transport interchange, to be built adjacent to the campus. Early works construction is in progress, with the campus scheduled for completion in 2025.</p> <p>As part of the project, a new CIT Yurauna at Bruce campus will be established as a hub of cultural support and culturally safe service coordination for the whole CIT learning community and the wider Aboriginal and Torres Strait Islander community.</p>
--	---------	--	--	--	--	---

Project	Estimated total cost (\$m)	Funding considered				Description
		0-5 years	5-10 years	10-15 years	15-20+ years	
<b>CIT Cloud Campus Program</b>	<50					The CIT Cloud Campus Program will modernise CIT's learning and teaching environments to enable students to access flexible and virtual learning environments through a cohesive digital ecosystem. Through the 2023-24 Budget, the ACT Government has provided \$7.2 million in funding to progress the program which will set the foundation for new ways of learning and foster innovation.
<b>Modernising Canberra Institute of Technology</b>	<10					The ACT Government will invest in the modernisation of the CIT's trades training equipment to ensure vocational education and training in the electronics, electrical, automotive, metal fabrication and engineering trades are adapted to current and emerging industry requirements. The ACT Government has provided \$3.7 million through the 2023-24 Budget to support this project, which will also include building and equipment upgrades across CIT campuses to improve disability access and ensure facilities provide teaching and learning spaces that align with contemporary industry and Work Health and Safety requirements.

## The ACT Government's investment in education infrastructure is driven by our commitment to ensuring all Canberrans have access to high-quality education close to their homes.

The ACT Government delivers lifelong education: from the earliest years to adulthood. There are currently 90 public schools across Canberra, spanning Early Childhood Education and Care services, preschool, primary schools, high schools and colleges.

The Canberra Institute of Technology (CIT) provides vocational education and training (VET) at its 5 campuses located in Reid, Bruce, Gungahlin, Tuggeranong and Fyshwick.

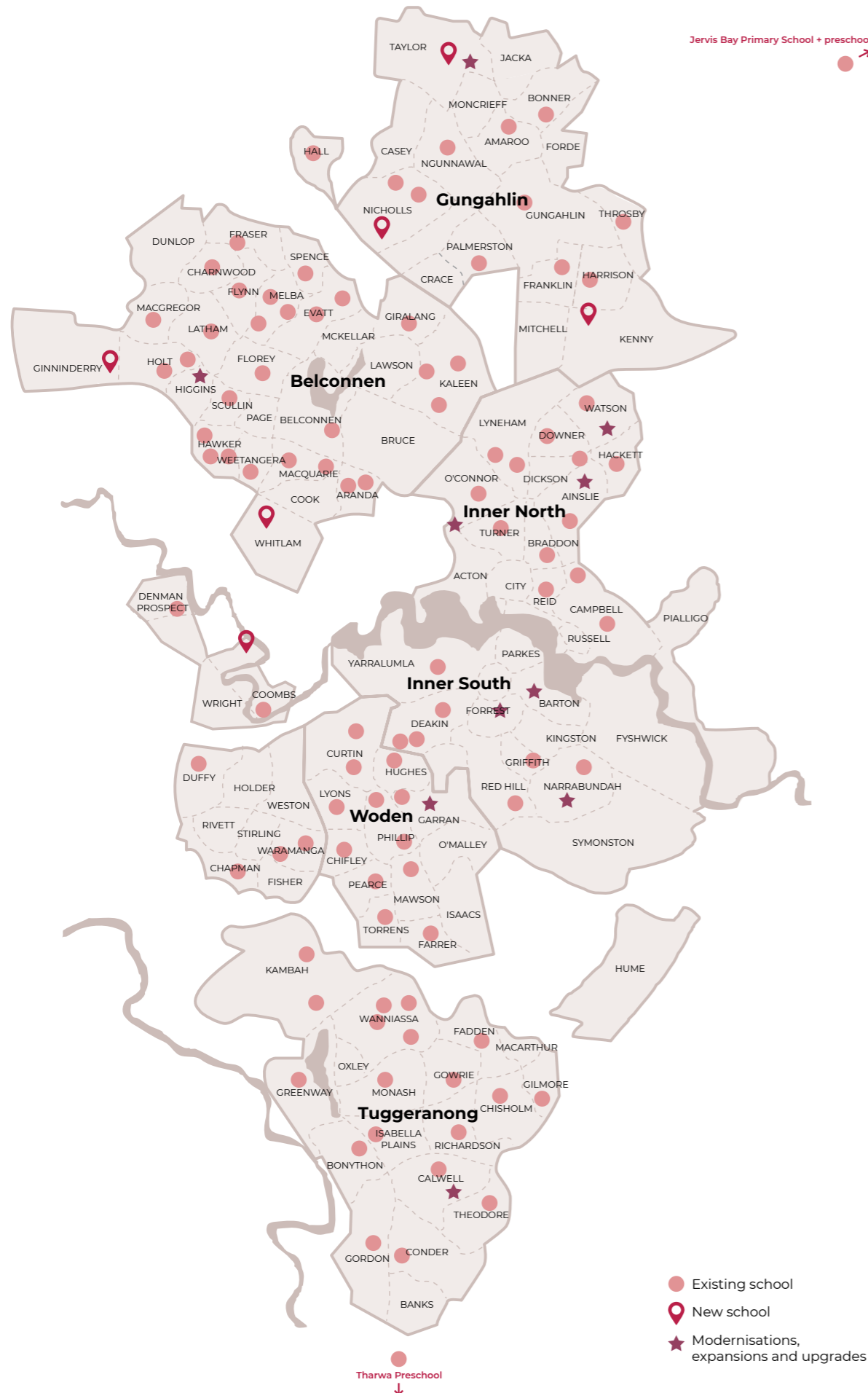
The government monitors population growth and projects enrolments of school-aged children to anticipate future public education demand. Population growth and projections inform investment decisions in new and expanded schools that are delivered in time to meet demand.

*CBR Switched On – ACT's Economic Development Priorities 2022-2025* builds on the ACT's ambition as a city of education and life-long learning journey. Canberra has an established reputation as the knowledge capital. Infrastructure investment with local tertiary institutions will establish education and innovation precincts integral to skilling the future workforce and attracting talent to the ACT.

Investment in this sector will be informed by the need to:

- Plan and deliver services and infrastructure for a growing population in the ACT and region.
- Continue to develop and upgrade facilities and deliver safe, contemporary learning environments that support delivery of high impact strategies and pedagogies.
- Provide teachers and students with enabling technology and digital tools.
- Create safe, inclusive and accessible spaces that improve the student experience.
- Provide shared community and recreational facilities outside of school hours.
- Connect more early childhood education and care services with public school infrastructure.
- Improve building sustainability.
- Strengthen Canberra's knowledge economy and skills, both now and into the future.

The ACT Government is also continuing to support our teachers to ensure we attract and retain the best educators for Canberra students.



## Investment in wellbeing

# The ACT Government's investment in school and life-long education infrastructure is driven by our commitment to putting community wellbeing at the centre of our decision-making.

Investing in education is investing in strong school communities, an empowered education workforce including teachers, and the skills we need for the future.

Supporting the wellbeing of children in their early childhood and school years and providing access to quality education not only increases social connection but sets our children up for positive outcomes across many areas throughout their lives.

Additionally, access to high-quality higher education and VET is a key driver of economic wellbeing and contributes to positive social outcomes for individuals, including improved physical and mental health.

## Service Planning

### Early Childhood Education and Care

The ACT Government has long recognised the benefit of investing in quality early childhood education and care, and we know that children's early years set the groundwork for a lifetime of learning.

Through *Set up for Success*, the ACT Government has committed to working towards 15 hours per week, 600 hours per year, of free universal early childhood education for 3-year-old children. Since 2020, we have provided

3-year-old children who are most in need – those experiencing vulnerability or disadvantage – access to two days per week, 48 weeks per year, of free, quality early childhood education. Up to 100 places are also available for Aboriginal and Torres Strait Islander 3-year-olds in Koori Preschool.

Building on this, from the start of 2024 all Canberra families will be able to access one day per week of free 3-year-old preschool. The ACT Government will continue to invest in the early childhood education and care workforce and work in close collaboration with the sector partners to support children's access to two years of high-quality early childhood education and care prior to starting school.

### School Education

The *Future of Education Strategy* applies to all schools, both government and non-government. At its centre is an acknowledgement of the diversity among our students. The ACT education system of the future will be personalised to each child. It will celebrate the differences that affect needs, abilities, motivations, interests and aspirations.

The *Future of Education Strategy* continues to inform ongoing planning for education infrastructure which improves inclusiveness and accessibility, and delivers contemporary learning environments and facilities for students, teachers and the local community.

The *Inclusive Education Strategy* is part of the *Future of Education Strategy*. The *Inclusive Education Strategy* will, when published, outline how schools will be supported to strengthen inclusive practice and be welcoming and accessible to all children and young people who require additional supports and adjustments to access learning. This *Strategy* aims to support schools to develop the whole student – intellectually, emotionally, socially, physically and culturally.





### Further Education

In addition to school education, access to life-long learning opportunities – including through VET or higher education – is important to ensure that individuals are skilled to succeed and take advantage of new opportunities.

Skills shortages and accelerated change in the world of work have put a spotlight on skills, and the opportunity for Canberra's local training providers to contribute to building the skilled workforce we need to secure and build on Canberra's prosperity.

*Skilled to Succeed* is focused on addressing skills shortages today and building workforce capability to support the growth of emerging industries. This agenda focuses on four key priorities:

- Delivering skills inclusively to provide all Canberrans a foundation for lifelong learning;
- Building a more responsive, flexible and future-focussed skills system;
- Assisting employers to build, attract and retain the right workforce; and
- Strengthening skills sector foundations.

Similarly, *Canberra Switched On* outlines the government's ambition to position Canberra as a city where innovation, creativity and entrepreneurship are encouraged and celebrated. To do this, we will build on our:

- Existing infrastructure;
- Digital mindset;
- World-class tertiary education and research sector;
- Cooperative regulatory settings; and
- Highly educated population.

Delivering this ambition requires a city of individuals with the capacity and ability to gain new skills and adapt to changes in life circumstances, economic conditions and emerging labour market opportunities.

Every Canberran – not just young people leaving school today, but anyone at any point in their lives who wants to upskill, re-skill or reconnect with work – should be able to access educational opportunities. To ensure our skills system remains able to meet these needs, the ACT Government is continuing its commitment to the Canberra Institute of Technology (CIT) as the cornerstone of Canberra's training system.

Additionally, Canberra is home to many of the top ranking universities and research institutions in Australia, including The Australian National University (ANU), the University of Canberra (UC), UNSW Canberra, CSIRO and Geoscience Australia.

**Investment in VET and tertiary education infrastructure provides a platform to expand the ACT's strong research, innovation and knowledge sectors, and to ensure all Canberrans can access learning opportunities that meet their needs.**

## Addressing Community Needs

As our city continues to grow, towards an expected population of half a million residents by 2027, it is vital that our high-quality public education system grows with it.

Natural population growth, migration and demographic distribution of school-aged students are evidence-based drivers of investments in public school infrastructure.

Planning ahead ensures every ACT child from kindergarten to Year 12 is guaranteed a place at their local public school, as required under the *Education Act 2004*.

### Monitoring growth and anticipating demand

The government anticipates future demand by closely monitoring population growth and enrolment fluctuations, monitoring capacity across all public schools and through developing enrolment projections to predict enrolment demand for all schools in the ACT.

The recently released District Strategies provide the principal land use planning directions that guide patterns of growth and associated infrastructure investments, in concert with Education service planning.

Education enrolment projections are developed in collaboration with the Australian National University School of Demography.

Projections inform demand planning by government for all education settings, including early childhood, public and non-government schools as well as vocational and tertiary education. This includes land planning across government to ensure the availability of future education locations for all education settings and sectors.

Monitoring projections and enrolment fluctuations includes, but is not limited to, monitoring the students already enrolled in ACT public schools and planning to ensure there are sufficient high school and college places available in the right districts, as those students progress through their schooling.

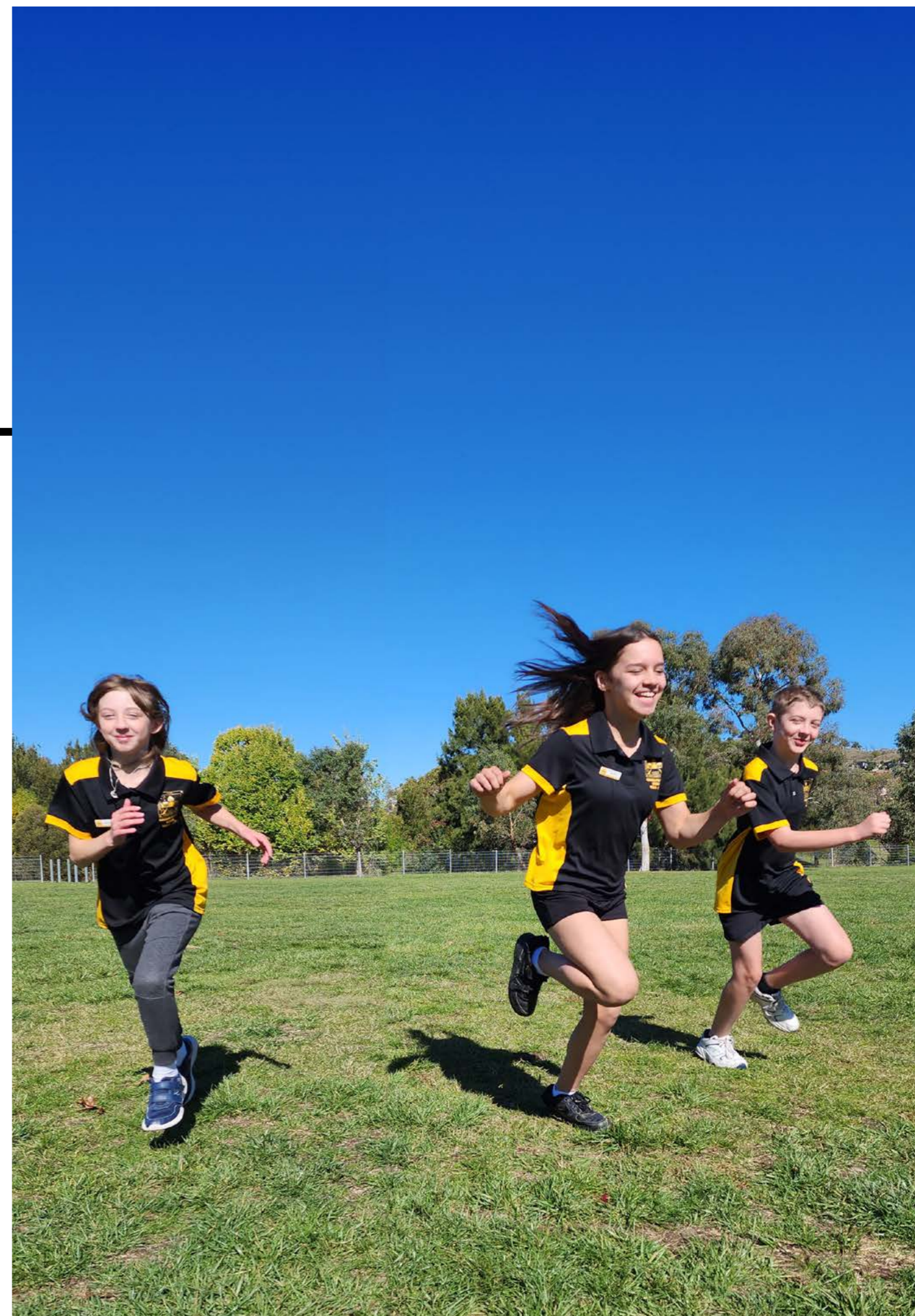
Across all public schools, the ACT Government makes best use of available capacity and facilities across the education system, including through enrolment policy, to meet demand. Where new or expanded infrastructure is required to provide additional capacity, early planning work will support demand management, including where infrastructure takes longer to deliver due to external influences such as construction market impacts.

### Increasing population and demand for early childhood education and care and public schools

Growth in schooling demand from Early Childhood Education and Care through to Year 12 is expected to continue over the next decade.

While the main source of predicted future enrolments is births, the continuing increase in demand is also driven by an increasing preference for public education, demonstrated over the last decade. In 2012, 59% of ACT students, including pre-schoolers, were enrolled at a public school. From 2018 to 2022 this proportion rose to over 62%, and in 2023 it dropped slightly to 61.4%.

**Overall, the demand for public school enrolments has grown from 40,000 in 2012 to 50,556 in 2023.**

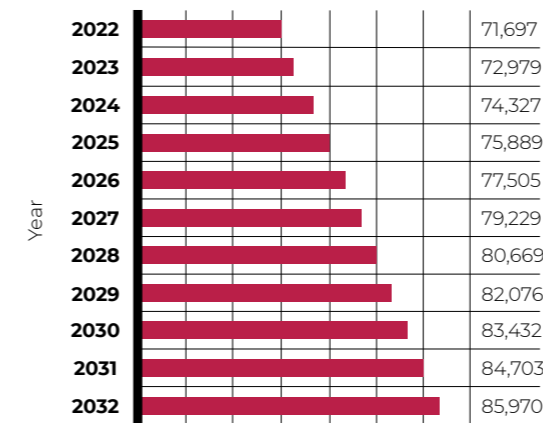




In the past decade, the number of children attending early childhood education and care services in the ACT increased by 6,000 from 13,000 in 2012 to 19,000 in 2022.

Kindergarten to Year 12 (K-12) school age population is now expected to increase by over 14,000 across the next 10 years (over 15,000 if preschool is included).

### Forecast Growth in ACT K-12 School Age Population



Primary school aged population is expected to increase by almost 8,000 alone over the next 10 years, with high school age population growing by over 4,000 across this period. By 2032, the K-12 population in Canberra is forecast to be approximately 86,000.

### Responding to locations of growth

The location of growth also shapes investment decisions. As with recent years, forecast growth will not be evenly distributed across the ACT. Correspondingly, the need for new schools and expanded capacity will be concentrated in areas of greater development.

The established parts of Canberra – including north and south Canberra as well as Woden Valley – will require investments into education and care services, primary and high school capacity

over the longer-term future as these areas continue to experience urban renewal and higher density driven in part by the increase in development around transport corridors as part of delivering a more compact city.

Based on current trends, investments into education and care services, primary and high school capacity will be required in north Molonglo as well as Belconnen in the 5 to 10 year period and beyond as these districts continue to expand and experience significant population growth.

**The highest growth is forecast to occur in Molonglo which is expected to have almost 5,000 more K-12 school aged students in around 10 years as new residential development continues.**

Belconnen is forecast to experience strong population growth in the outer areas driven primarily by greenfield developments in west Belconnen (Ginninderry), as well as potentially Gooromon.

In contrast to the greenfield driven population growth in Molonglo and outer Belconnen, greater densification and urban renewal in established districts of the ACT including in central Canberra will be the major driving factors for public school demand in these areas.

Gungahlin is expected to experience strong growth, though lower compared to the recent past, as part of its development-driven demographic cycle which saw major land releases occur over the past two decades.



In addition to Canberra's natural population increase, migration is a significant driver of increased enrolment demand. The majority of people who move to Canberra from interstate and overseas do so to work or study, and many bring families with them which include school-aged children. With the ACT projecting ongoing population growth from overseas and interstate migration, demand for places at local Canberra public schools is expected to continue.

## The ACT Government's investment in school infrastructure and capacity is driven by our understanding of these district-level demographic trends, forecast enrolment growth and available capacity over the long term.

### Regional enrolment demand

While the NSW Government is responsible for providing schooling for NSW resident students, the ACT Government has a long-standing history of providing education services to NSW residents living in the region surrounding Canberra.

In planning for future school capacity, it is necessary to consider how regional population growth also adds to public school demand. In 2023, there were over 5,000 students from outside of the ACT studying at public and non-government

schools in Canberra. This equates to about 6% of the ACT student cohort residing in NSW.

Families living in NSW and enrolling in ACT public schools have certainty of enrolment through the NSW Enrolment Pathway at all stages of schooling – primary, secondary and college. Once a student is enrolled on a Pathway, they will be guaranteed a place on that Pathway.

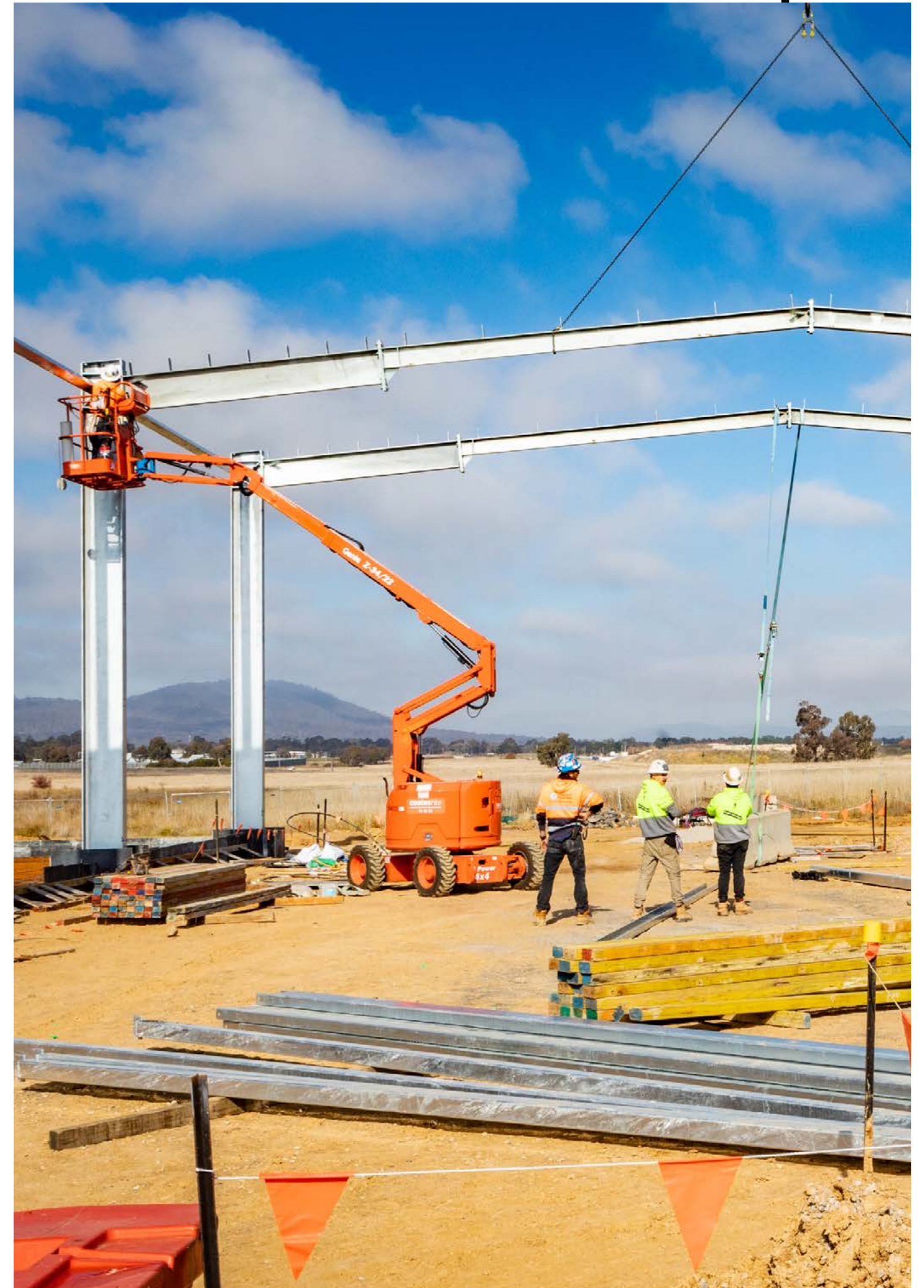
### Demand for non-government school sites

The non-government school sector consists of a range of schooling options. The variety of schools in the sector reflects the diversity of the community in the ACT and caters for the preferences of families for a particular style of education.

The government has committed to release three blocks of land across the Territory for the construction of new non-government schools, with land planning for these sites well underway.

Land for a new non-government school in Wright was identified on the Indicative Land Release Program and provided through a tender process in 2023. The new Anglican school is expected to host up to 1800 students from early childhood education and care through to college and be the first non-government school in Molonglo Valley.

The ACT Government will continue to make land available for the development of new non-government schools in the future to ensure families have access to a range of schooling options and meet a recognised requirement for community use.





### **Early Childhood Education and Care Services in ACT Government buildings**

To support delivery of the *Future of Education* and *Set up for Success* strategies, since 2022, early childhood education and care services are included in all new masterplans for ACT public primary schools. This infrastructure supports delivery of the ACT Government's commitment to universal 3- and 4-year-old preschool.

The ACT Government owns 38 buildings accommodating standalone early childhood education and care services, providing 2,443 places for ACT children. Of these, 36 services are operated by community-run providers offering critical high-quality affordable education and care, often to the most disadvantaged and vulnerable families in the community.

There is a deficit of community-run early childhood education and care services in suburbs established after 2000, and most existing properties are over 40 years old and require ongoing maintenance and upgrades.

### **Creating safe and inclusive spaces**

The ACT Government's commitment to inclusive education across ACT public schools is supported by the development of an *Inclusive Education Strategy*. The *Inclusive Education Strategy* will support the ACT Government in its commitment to ensure all new public school builds and upgrades are inclusive, and reflect the principles of equity, universality and non-discrimination.

Inclusive education means that all children and young people can learn and participate in education on the same basis as their peers. This also means that the views of children and young people, and their families are considered in designing learning options that best meet their needs. In partnership with the student, parents, carers and other professionals, we make reasonable adjustments for students with disability, supporting them to access and participate in the school curriculum, programs and activities on the same basis as their peers.

In planning for the future, our learning environments and approaches to teaching must make this inclusion and sense of belonging seamless.

### **Supporting a cultural integrity and diversity in the ACT public school community**

Ensuring all Aboriginal and Torres Strait Islander students are able to achieve and reach their full potential is a key focus of the ACT Government. There were 2,187 Aboriginal and Torres Strait Islander children and young people enrolled in ACT public schools in 2023, representing 4.3% of total enrolments.

Our diverse ACT community is reflected in our ACT public school communities. In 2023, 22.4% of ACT public school students identified as speaking a language other than English at home, with the top eight languages spoken being Mandarin, Arabic, Urdu, Hindi, Vietnamese, Punjabi, Bengali and Telugu.

There is ongoing investment in infrastructure that delivers enhanced learning spaces suitable to our diverse population. For example:

- Introductory English Centres (IECs), co-located in ACT public schools, are available for students who require intensive full-time English language instruction prior to their commencement at an ACT school.
- The availability of multi-faith rooms recognises the cultural and religious diversity of our school communities.
- Aboriginal and Torres Strait Islander community input is a key feature in the naming of new schools, led by the Education Directorate in consultation with the ACT Place Names Committee.
- In 2020, students from Lake Tuggeranong College and Gilmore Primary School worked together to build an Aboriginal plant use garden in the natural play space at Gilmore Primary. This garden provides students with a space to explore the natural world around them, foster connections with country and with the land, and learn about Aboriginal and Torres Strait Islander cultures.

### **Expanding, upgrading and modernising educational facilities**

Improvements and upgrades to ACT school infrastructure are necessary to ensure that all students can benefit from educational opportunities, with a focus on creating modern, safe and inclusive facilities.

In addition to new schools in greenfield areas, there is an ongoing need for permanent expansions and for

modernisations of established, ageing schools. Many ACT schools were established 50 to 60 years ago, and some are even older.

The Public School Infrastructure Renewal Program is an annual rolling program funding upgrades to school facilities and infrastructure at ACT public schools.

Modernisations and expansions deliver on the dual imperatives of meeting increased enrolment demand while improving the quality, safety and amenity of ageing infrastructure, and ensuring facilities remain suited to the delivery of modern educational approaches and inclusive learning.

A further benefit of modernisations is that existing Priority Enrolment Areas (PEAs) can be maintained, without unnecessarily disrupting established community expectations by introducing changes to PEAs.

### **Investing in community facilities in our schools**

Schools provide valuable gathering places and facilities for the broader ACT community. A range of school facilities are available for community use, such as sporting courts, fields and ovals, gymnasiums, halls and meeting rooms, technology facilities, performing arts facilities, and varied outdoor spaces.

The ACT Government is continuing to invest in school facilities which are also suitable for community use, to meet the demands of our growing population. In the 2023-24 ACT Budget, the ACT Government invested \$2.4 million to improve community access to facilities at 12 public schools through an online booking platform and electronic access systems.





### Contemporary technology and digital tools

Digital learning is an integral part of the contemporary learning environment across primary and high schools as well as colleges. The ACT Government is committed to providing public school students with Information Communication Technology (ICT) that is fit for the learners of today.

We continue to invest in contemporary technology and digital tools which support our students to:

- access real-world learning platforms that are easy to use and familiar to them, so they can learn, create, communicate and collaborate from anywhere;
- connect to reliable high-speed internet, so they are connected to learning, their teachers and each other as a learning community; and
- use their own personal device of choice, so their access to learning is personalised and follows them wherever they go.

The online services we provide enable our schools, in partnership with parents, to support young people to be safe and productive online. Investment in this technology will assist students to be equipped with vital 21<sup>st</sup> century skills, alongside foundational learning and a balanced learning environment that also includes physical activity and outdoor learning.

### Delivering sustainability in our schools

Sustainable design is a central focus in all new schools and upgrade works. Sustainable design principles are considered in every new school design, modernisation and upgrade as part of to the ACT Government's 2045 net zero greenhouse emission target.

Sustainable design is one of the overarching principles within the Education Directorate Infrastructure Specifications, which requires the design of works to consider and incorporate the necessary elements to create sustainable education environments.

These elements include architecture, landscape, transport, linkages to broader networks and infrastructure that are low carbon, water sensitive and resource efficient in both construction and operation.

In upgrading existing infrastructure, this has also included replacing old heating systems with low-to-zero emissions alternatives and refurbishing older buildings to have better thermal performance and energy efficiency.

## This sustainable design approach supports our commitment to the ACT Government's 2045 net zero greenhouse emissions targets.

### Lifelong Learning and Skilling for the Future – enabling Vocational and Higher Learning

Our vocational and tertiary education and research sectors are one of the key foundations of our economy, and to capitalise on our opportunities for knowledge-based economic growth, we need to ensure our workforce has the right skills for in-demand jobs – now and in the future.

The Australian skills sector has undergone significant structural and policy change over the past decade, including adapting to the impacts of the COVID-19 pandemic. As new skills priorities, reform agendas, and shifts in investment occur, it is critical that the ACT has the right people, at the right time, to continue to deliver on government priorities and meet the needs of our community.

The knowledge economy also presents growth opportunities for ACT's universities and knowledge-based organisations to capitalise on the Territory's economic strengths. This focus will create jobs, drive economic diversification and growth, and offer new and exciting opportunities for Canberrans.

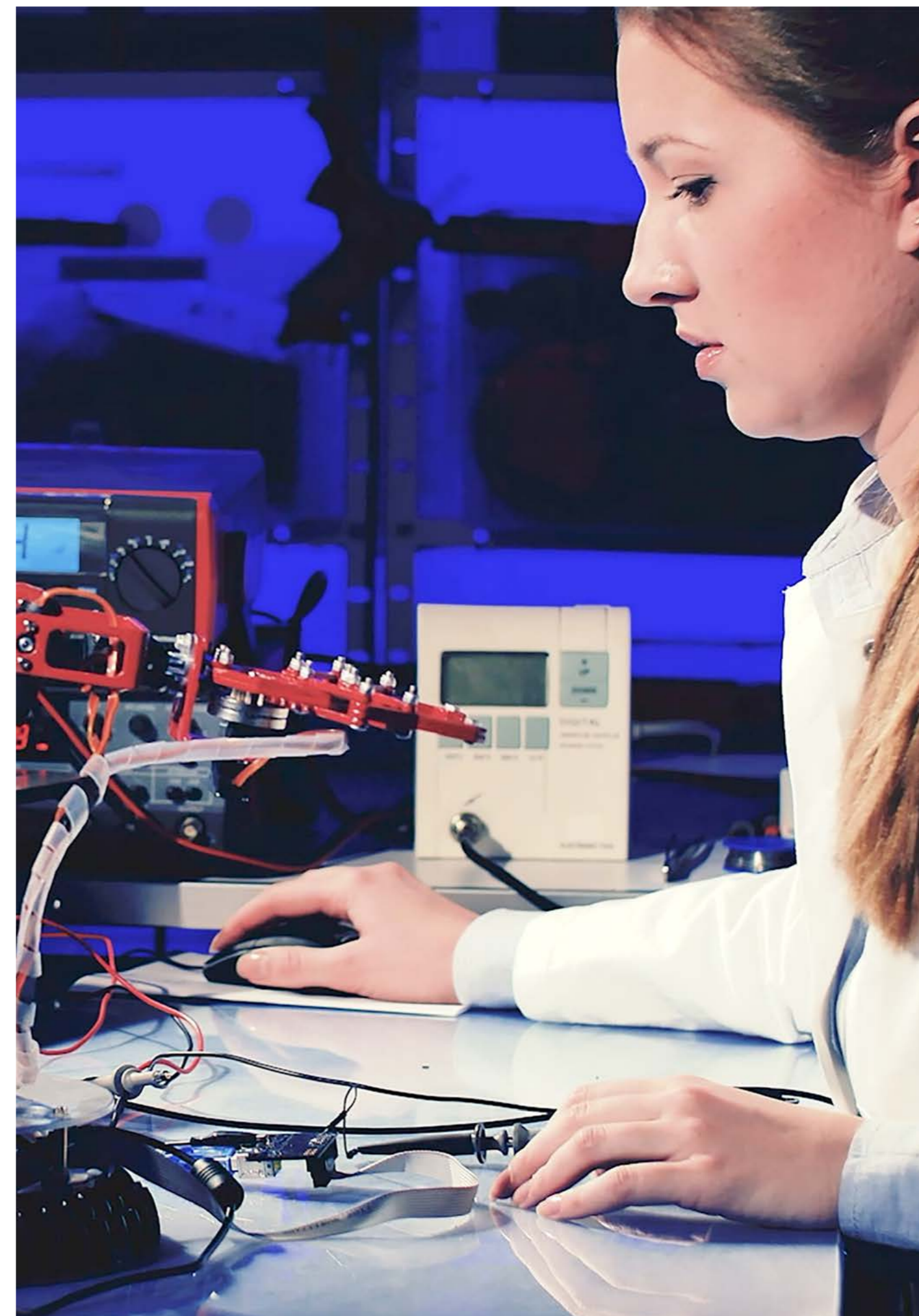
The need for future-focused, digitally-enabled, and well-connected education institutions is paramount, and these priorities have been developed to align with and support the delivery of Skills Canberra's *Skilled to Succeed* and *Canberra Switched On* to achieve this.

The Canberra Institute of Technology (CIT) is a dynamic, connected and diverse vocational education and training institution. CIT offers quality education and training through the development of unique learning experiences that meet national training package requirements and provide students with meaningful qualifications and industry with job-ready graduates.

CIT's *Strategic Compass 2025 – CIT Futures* (Strategic Compass) outlines the direction for CIT through the following strategic priorities:

- Enhancing the **student experience** through the student journey;
- Delivering **contemporary skills**, providing students with skills for life, enabling life-long learning;
- In support of the government's commitment to **campus renewal** for CIT, enabling smart and stimulated learning environments across all campuses;
- **Digitalisation** to support the continual increase in technological capabilities, enabling effortless collaboration, innovation, and skill development;
- Attract, recruit, and develop **our people** to be future-ready;
- Create a climate of cross-industry innovation, building on and fostering **partnerships** unique to our ACT and regional ecosystem; and
- Embed **sustainability** at the core of our thinking, strategy, and business operations.

Significant shifts associated with the COVID-19 pandemic, new digital platforms and technology, a changing national and ACT VET environment, the priorities outlined in CIT's *Strategic Compass* strategy, and the ACT Government's investment in a new CIT campus at Woden have aligned to create a window of opportunity for CIT to intensify and accelerate its transformation efforts.





## The ACT Government has a strong pipeline of investment in both new and expanded public schools planned across Canberra to meet expected demand.

Priorities beyond the current ACT Budget are identified for the whole of the ACT region through the Indicative Project Pipeline. They include new schools in greenfield suburbs, school expansions, and the modernisation of established schools, including:

### **New, expanded and modernised schools**

The ACT Government is continuing to build, upgrade and expand public schools to ensure every child has access to the modern, accessible and sustainable school facilities that support high-quality education. Comprehensive forward planning ensures schools are easy to get to, well-designed, sustainable, safe and inclusive.

As the ACT population increases, the government will continue to monitor and plan for future demand and capacity in early childhood education and care facilities, primary, high schools, and colleges. Where projects are not already funded, works will be subject to future Budget decisions.

Older schools will be modernised and upgraded to ensure learning settings meet the needs of students, the workforce and pedagogy.

### Early Childhood Education and Care

New schools will include co-located early childhood education and care centres to meet anticipated demand and provide high-quality, inclusive teaching and learning spaces that give every child a fair start to life.

### Public School Infrastructure Renewal Program

The ACT Government will continue delivering upgrades and renewal to ensure every child has access to modern, accessible and sustainable facilities that support high-quality education.

### Roof replacement program

The ACT Government is continuing to invest in the renewal of public school facilities by replacing roofs at a range of ageing ACT schools.

### Hazardous Materials Removal Program

The government is committed to ensuring all buildings remain safe for the community and has invested to accelerate the removal of hazardous materials across ACT public schools, in addition to the Public School Infrastructure Renewal Program and regular repair and maintenance.

### Inclusive public education infrastructure and upgrades to specialist schools

Meeting the needs of students with disability and providing inclusive education for all students, supporting them to access and participate in school curriculum, programs and activities on the same basis as their peers. Future infrastructure will be supported by the *Inclusive Education Strategy*, a 10-year strategy set to be released later in 2023.

The government will deliver upgrades at Cranleigh School and Black Mountain School to ensure continued high-quality specialist education services.



## Canberra's world-class education and research institutions attract students from across Australia and the world.

Investment in education plays a critical role in skilling our workforce and continuing to grow Canberra's knowledge economy. Vocational education and training (VET) is a critical part of supporting life-long learning, inclusion, and community and economic participation.

The Canberra Institute of Technology (CIT) is the leading provider of VET for Canberra and the region. Canberra is also home to many of the top-ranking universities and research institutions in Australia, including The Australian National University (ANU), the University of Canberra (UC), UNSW Canberra, Data61, CSIRO and Geoscience Australia.

Continuing and expanding our strong and trusting partnerships with the tertiary education, industry sectors and research institutions, including universities, colleges, and vocational education and training institutions, ensures we are developing the necessary skills and knowledge to address the challenges we face now and into the future.

The ACT Government is continuing to support the growth of the ACT's higher education sector, including through support and enabling work to facilitate investment in infrastructure by Canberra's universities. This includes investment in the UNSW Canberra City Campus; supporting the growth of ANU through strategic land use in the city, and ensuring planning settings can facilitate growth of UC.

### **CIT Woden Campus**

The ACT Government is building a contemporary and sustainable CIT campus in the heart of Woden.

The 2019 Infrastructure Plan identified the need to replace the current CIT Reid campus with a new facility, including through the option of establishing an entirely new campus for CIT in the Woden Town Centre. Since this time, significant planning and design work has been undertaken to progress this project, informed by consultation with the community and key stakeholders.







Artist Impression;  
CIT Woden Campus redevelopment

The CIT Woden Campus project will deliver a purpose-built CIT Campus, Youth Foyer and a new public transport interchange in the Woden Town Centre.

The new state-of-the-art campus, designed with environmental sustainability at the forefront and innovative contemporary digital and face-to-face learning capabilities, will support up to 6,500 students to learn each year. It will create smart learning settings, simulated learning environments, commercial kitchens and hands-on training spaces to help students achieve their full potential in areas such as business, cyber security, IT, creative industries, culinary, hair and beauty, hospitality and tourism.

A Youth Foyer will also be delivered within the campus precinct to support vulnerable young people. It will provide accommodation, support services and opportunities to pursue education and training all in one location.

With an investment of \$325.1 million, the CIT Woden Campus project represents one of the most significant investments in Canberra. It will create modern education and community facilities in a central, well-connected part of Woden, complemented by the new public transport interchange.

## The Woden Campus construction works are underway, with an anticipated commencement of classes in 2025.

### CIT Yurauna at Bruce

The ACT Government is investing in the establishment of a new CIT Yurauna at Bruce campus as a hub of cultural support and culturally safe service coordination for the whole CIT learning community and the wider Aboriginal and Torres Strait Islander community.

The hub will provide a space and appropriate facilities and equipment to:

- embed cultural practices through education;
- enable cultural collaboration with Aboriginal and Torres Strait Islander Elders, peak bodies, government agencies and community-controlled organisations; and
- co-locate culturally appropriate services, such as health and wellbeing support and early childhood education and care.

### CIT Cloud Campus Program

A key piece of digital infrastructure in the education sector, the CIT Cloud Campus Program will modernise CIT's learning and teaching environments, and business and administration systems, to support flexible, accessible and contemporary learning practices that respond to the current and future education and economic needs of the ACT.

The Cloud Campus will enable students to access flexible and virtual learning environments by enabling the development and delivery of CIT virtual learning content in a cohesive digital ecosystem. It will fit seamlessly into the new flagship Woden Campus, aligning to the vision for the Woden Smart Precinct and Smart Campus Digital Infrastructure.

Through the 2023-24 Budget, the ACT Government has provided \$7.2 million in funding to progress the program which will set the foundation for new ways of learning, foster innovation and support students in their life-long learning journey with CIT.

### **Modernising Canberra Institute of Technology**

CIT has campuses across the ACT, in Reid, Bruce, Fyshwick, Gungahlin, Tuggeranong and soon in Woden. While the plans for the future of Reid and Woden are well known, the ACT Government will explore opportunities for renewal across all campuses to ensure CIT's infrastructure is able to deliver the skills for Canberra's future.

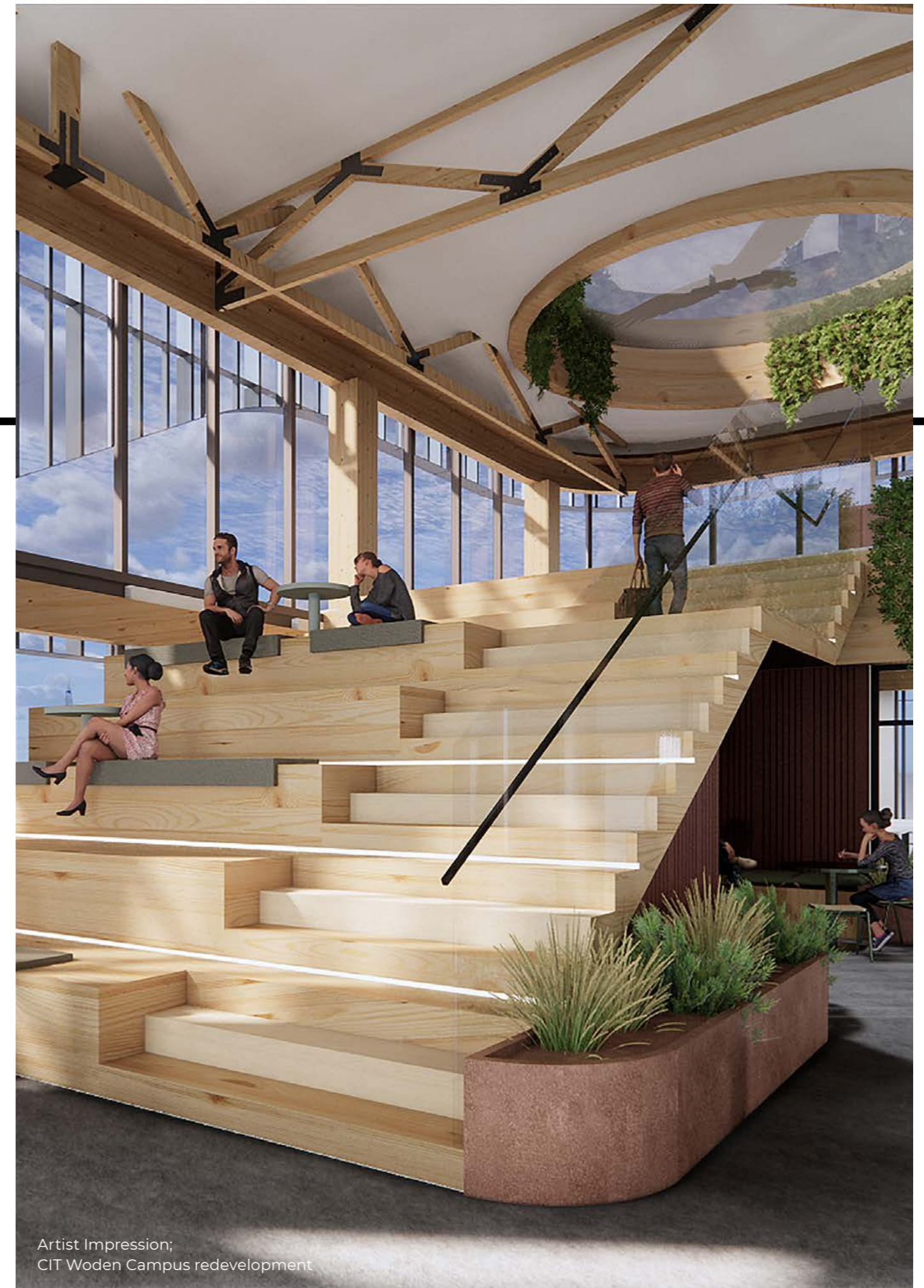
CIT's position in the knowledge economy will be enhanced by looking at opportunities for strategic investment in emerging innovation precincts and in areas where CIT are leading the way in skills delivery for the modern economy.

## **CIT will play a critical role in skilling the workforce to support the electrification of the ACT economy.**

The ACT Government will invest in the modernisation of CIT's Fyshwick campus to ensure delivery of electrical, automotive, metal fabrication and plumbing respond to current and emerging skills needs and industry requirements, with the potential to become a net zero centre of excellence.

Work will be undertaken to inform longer term planning, including the potential development of campus master plans, and future infrastructure investments across the CIT campus network. In doing so, the government will consider opportunities presented through the emerging East Lake Innovation Precinct in Fyshwick, the Gungahlin Town Centre east development and the future northside hospital precinct in Bruce. Opportunities for partnerships with universities will also be explored.

The government is also committed to improving the sustainability, accessibility and utilisation of campuses. The ACT Government has provided \$3.7 million through the 2023-24 Budget to support this project which will also include building and equipment upgrades across CIT campuses to improve disability access and ensure facilities provide teaching and learning spaces that align with contemporary industry and Work Health and Safety requirements.



Artist Impression;  
CIT Woden Campus redevelopment

2019 Indicative Project Pipeline	Update
<b>New schools and campuses</b>	
<b>New P-6 schools and Early Childhood Education and Care service to address demand and land release</b>	<p>The ACT Government is continuing to monitor and analyse projected primary school demand, and plan for new or expanded primary school capacity, so that every ACT child from kindergarten to Year 12 continues to be guaranteed a place at their local school.</p> <p>Since 2022, early childhood education and care services are included in all new masterplans for ACT public primary schools, in recognition of the important role early childhood education and care services play in supporting the wellbeing of ACT children and families.</p> <p>The ACT Government opened the junior campus of Evelyn Scott School in 2020 and opened Throsby School in 2022.</p>
<b>New 7-10 schools to address demand and land release</b>	<p>The ACT Government is continuing to monitor and analyse projected high school demand, and plan for new or expanded high school capacity, so that every ACT child from kindergarten to Year 12 continues to be guaranteed a place at their local school.</p> <p>The ACT Government opened the senior campus of Evelyn Scott School in 2023 and will shortly open two new high schools in Gungahlin, with Shirley Smith High School set to open in 2024, and the new high school in Taylor set to open in 2025. Since 2019, the ACT Government has also conducted site assessments for appropriate land for education use in the Woden, Molonglo and Belconnen districts.</p>
<b>New CIT campus</b>	<p>A new CIT campus in the heart of Woden remains a priority. With an investment of \$325.1 million, the CIT Woden Campus project represents one of the most significant investments in Canberra. To be complemented by a new public transport interchange, the project will deliver a purpose-built CIT campus to support up to 6,500 students to learn each year and include a Youth Foyer within the campus precinct to support vulnerable young people. As part of the project, a new dedicated Aboriginal and Torres Strait Islander Education Centre of Excellence, CIT Yurauna, will also be delivered at the CIT Bruce Campus. Early works construction is in progress, with the campus scheduled for completion in 2025. See key priorities for more information.</p>
<b>Delivering a new high school at Kenny</b>	<p>Construction is underway on the new Shirley Smith High School in Kenny, with the school set to open in 2024. The ACT Government has invested \$85.9 million to deliver this new high school which will cater for up to 800 students in Years 7 to 10. The new school will have modern teaching and learning environments, and deliver new community facilities accessible to the community outside of school hours.</p>
<b>P-6 School with an early childhood education and care service in Whitlam, Molonglo</b>	<p>The ACT Government has invested \$76.8 million to construct a new early childhood education and care to Year 6 primary school in Whitlam. The early childhood education and care service will have 130 places and the primary school will have capacity for up to 780 students, with the capacity to add up to an additional 200 places in future. The school is in the early design phase and expected to open for the 2026 school year.</p>

2019 Indicative Project Pipeline	Update
<b>Narrabundah College modernisation</b>	<p>The ACT Government has committed \$32.5 million for Stage 1 of the modernisation of Narrabundah College, redeveloping and replacing ageing infrastructure with contemporary learning environments and facilities. Development of the master plan is underway, with the modernisation to be undertaken in multiple construction stages sequenced over the next 5 to 10 years to allow the College to continue operations.</p>
<b>New specialist school</b>	<p>Through the 2023-24 Budget, the ACT Government is investing \$8.0 million to deliver infrastructure upgrades at Cranleigh School and Black Mountain School. The upgrades will ensure infrastructure meets modern standards for specialist education, and support modern teaching and learning practices. This builds on the ACT Government's previous investment of \$8.0 million in the 2020-21 Budget in upgrades and modernisation works at Black Mountain School, which included upgrades to learning spaces, bathrooms and playgrounds.</p> <p>The ACT Government has committed to ensuring all new public school builds and upgrades are inclusive, and reflect the principles of equity, universality and non-discrimination. Future infrastructure will be supported by the Inclusive Education Strategy, a 10-year strategy which will outline how schools will strengthen inclusive practices to ensure students with disability can learn and participate in education on the same basis as their peers.</p>
<b>Early Childhood Education and Care services – Molonglo and Throsby primary</b>	<p>Since 2022, early childhood education and care services are included in all new masterplans for ACT public primary schools. The new primary school in Whitlam in the Molonglo Valley, set to open in 2026, will include an early childhood education and care service. An early childhood education and care service has been included in the master plan for Throsby School, and demand continues to be monitored to inform its future delivery.</p>
<b>Delivering a new primary school at Throsby</b>	<p>Throsby School opened for the start of the 2022 school year. The \$43.9 million school was the ACT's third zero-emissions school, building on the ACT Government's commitment to reach net-zero emissions by 2045. Its sustainable buildings include state-of-the-art learning spaces, break out rooms, interactive equipment and outdoor play areas. The school also features a multi-purpose gym for basketball, netball, volleyball and badminton, which is available for community use.</p>
<b>More schools, better schools – Delivering Molonglo P-6</b>	<p>Evelyn Scott School's junior campus opened in 2021. The adjoining senior campus opened for the start of the 2023 school year, completing the \$70.0 million preschool to Year 10 school, with capacity to accommodate more than 1200 students. Evelyn Scott School features facilities available for community use, including a sporting oval which is suitable for soccer, rugby league and rugby union, and two cricket nets.</p>

2019 Indicative Project Pipeline	Update
<b>Existing school expansion</b>	
<b>7-10 schools expansion</b>	Since 2019, the ACT Government has delivered expansions at Amaroo School and Gold Creek School, with both becoming operational in 2022. In the 2023-24 Budget, the ACT Government has provided \$47.3 million to modernise and expand Telopea Park School, which will increase the school's permanent capacity by 500 places to respond to enrolment growth in the Inner South.
<b>P-6 schools expansion</b>	Since 2019, the ACT Government has delivered expansions at Gold Creek School, Neville Bonner Primary School, Franklin School and Margaret Hendry School. Work continues to be progressed to deliver expansions at Garran Primary School and Majura Primary School, which will increase school capacity by up to 800 and 300 places respectively.
<b>North Canberra College</b>	The ACT Government is delivering expanded school capacity and infrastructure for college students residing in Gungahlin and the Inner North to meet the needs of a growing community. The expansion of the existing Gungahlin College is underway to meet increases in student demand, including internal modifications and relocatable learning unit infrastructure. Additionally, as of 2021-22, the Better Facilities for Gungahlin College project has delivered \$1.3 million worth of upgrades to support an improved student and teacher experience, including expanded support facilities and staff area modifications. Through the 2023-24 ACT Budget, the ACT Government is investing \$114.1 million to build a second college in Gungahlin, located to the north of the existing Gold Creek High School in Nicholls, by the end of the decade.
<b>Canberra College Expansion</b>	The ACT Government is continuing to monitor demand for college places in the Woden, Weston Creek and Molonglo districts, including at Canberra College in Phillip. The 2023-24 Budget provided \$3.0 million to progress planning and design works for a college in the Molonglo Group Centre.
<b>Transportable Buildings for expanding schools (across ACT)</b>	Each year, relocatable learning units (RLUs) are delivered to the schools of highest need. RLUs are a normal part of planning for growth, with similar solutions used across all states and territories. The ACT uses purpose-built transportable buildings which are fitted out as open, spacious and modern classrooms with all the same comforts and technology as a permanent learning space.
<b>Expanding Franklin Early Childhood School</b>	The ACT Government has increased school capacity at Franklin School, transitioning and expanding the Franklin Early Childhood School from a P-2 school into a full P-6 school. The expanded school can now cater for up to 600 students across Kindergarten to Year 6, in addition to the existing Early Childhood Education Centre. Completed in 2022, the \$29.5 million expansion includes new permanent buildings, a multi-purpose community hall and gymnasium, a sports field, hard courts landscaping and more parking.





2019 Indicative Project Pipeline	Update
<p><b>More schools, better schools – More places at Gungahlin schools</b></p>	<p>Since 2019, the ACT Government has increased capacity in Gungahlin's public schools to meet projected demand. By 2025, the ACT Government will deliver more than 1,500 further places, with the completion of Shirley Smith High School in Kenny and a new high school in Taylor.</p> <p>Works delivered in Gungahlin since 2019 include:</p> <ul style="list-style-type: none"> <li>— Expansions to both Gold Creek School's junior and senior campuses. The junior campus expansion, completed in 2020, allows for an additional 200 students. The senior campus expansion, completed in late 2022, similarly accommodates 200 extra students, raising the school's overall capacity to over 1,000 students. Both expansions delivered a mixture of contemporary learning areas ranging from large studios, adaptable learning spaces and smaller quiet spaces.</li> <li>— An expansion to Neville Bonner Primary School, completed in 2020, which provided a 150 place capacity increase.</li> <li>— An expansion to Amaroo School's senior campus, completed in 2022 and providing space for 200 additional students. The expansion features general learning areas, a food technology classroom, a dance/drama room and an adaptable performing arts space. Existing buildings have also been updated to create more general learning areas and to convert some spaces into science labs, visual art rooms or digital technology classrooms.</li> <li>— A 600 place expansion at Margaret Hendry School, providing new spaces to support specialist learning and small group programs.</li> </ul>
<p><b>School improvements</b></p>	
<p><b>Better schools for our kids – Public school infrastructure upgrades</b></p>	<p>The ACT Government is providing \$99.4 million to renew and upgrade public school infrastructure over 4 years from 2021, building on a previous investment of \$85.0 million over 4 years from 2017. Works include upgrades and extensions to existing classrooms, new classrooms, refurbished toilets and change rooms, garden and horticultural facilities, heating and cooling upgrades, and energy efficiency improvements.</p>
<p><b>More schools, better schools – Roof Replacement Program</b></p>	<p>Since 2019, the ACT Government has delivered roof replacements at Calwell High School, North Ainslie Primary School, Alfred Deakin High School, Telopea Park School and Wanniasa High School. Building on this achievement, the ACT Government has invested a further \$21.8 million to undertake roof replacements at Dickson College, Melba Copland Secondary School (both campuses), Latham Primary School, Gowrie Primary School, Red Hill Primary School and additional buildings at Telopea Park School.</p>

2019 Indicative Project Pipeline	Update
<b>Performing arts infrastructure for Belconnen Network</b>	The \$15.0 million Belconnen Arts Centre expansion, completed in 2020, provides high-quality rehearsal space and performance spaces to support more performances, exhibitions and community events for the local arts community – including school students. This multi-arts precinct offers spaces suitable for a range of creative activities: performing or presenting in the 200 seat theatre; holding a function in a gallery; developing a new work in the Rehearsal Room; hosting or attending a class, workshop, or meeting in the Dance Studio or Meeting Room; or hiring space for arts activities.
<b>Hedley Beare Centre refurbishment</b>	Upgrading the Hedley Beare Centre for Teaching and Learning in Stirling remains a longer-term priority for consideration.
<b>Hazardous Materials Removal Program</b>	Student, staff and community safety is a priority. The ACT Government is continuing to deliver the Hazardous Materials Removal Program. The Education Directorate regularly reviews the conditions of buildings containing hazardous materials, supporting a swift response to emerging issues.
<b>Supporting our School System – Improving ICT</b>	<i>The Better Schools - IT upgrade for school administration</i> project, completed in 2020-21, delivered \$10.0 million worth of IT upgrades for enhanced school administration. The ACT Government continues to invest in school information and communication technology (ICT) infrastructure – for example through the provision of wireless access to high speed networks – to support contemporary learning and teaching environments in ACT public schools.
<b>More schools, better schools – Upgrading Campbell Primary School modernisation</b>	The ACT Government delivered the \$18.8 million Campbell Primary School modernisation in 2022, with landscaping works expected for completion in 2023. This work strengthens the ACT Government’s commitment to improve school facilities and build state-of-the-art, sustainable educational facilities.
<b>Energy Efficient Heating Upgrades in ACT Public Schools – Stage 2</b>	The ACT Government has completed energy efficient heating upgrade works at Hawker College and Lyneham Primary School. Projects are also progressing to improve energy efficiency, heating and/or cooling systems at Fadden Primary School, Wanniasa Hills Primary School, Red Hill Primary School, Alfred Deakin High School and Forrest Primary School. These works will improve the learning environment and support increased building efficiency and thermal performance.





**Find out more**

To learn more about our  
ambition for Canberra, visit:

**[builtforcbr.act.gov.au](http://builtforcbr.act.gov.au)**



**BUILT  
FOR  
CBR**