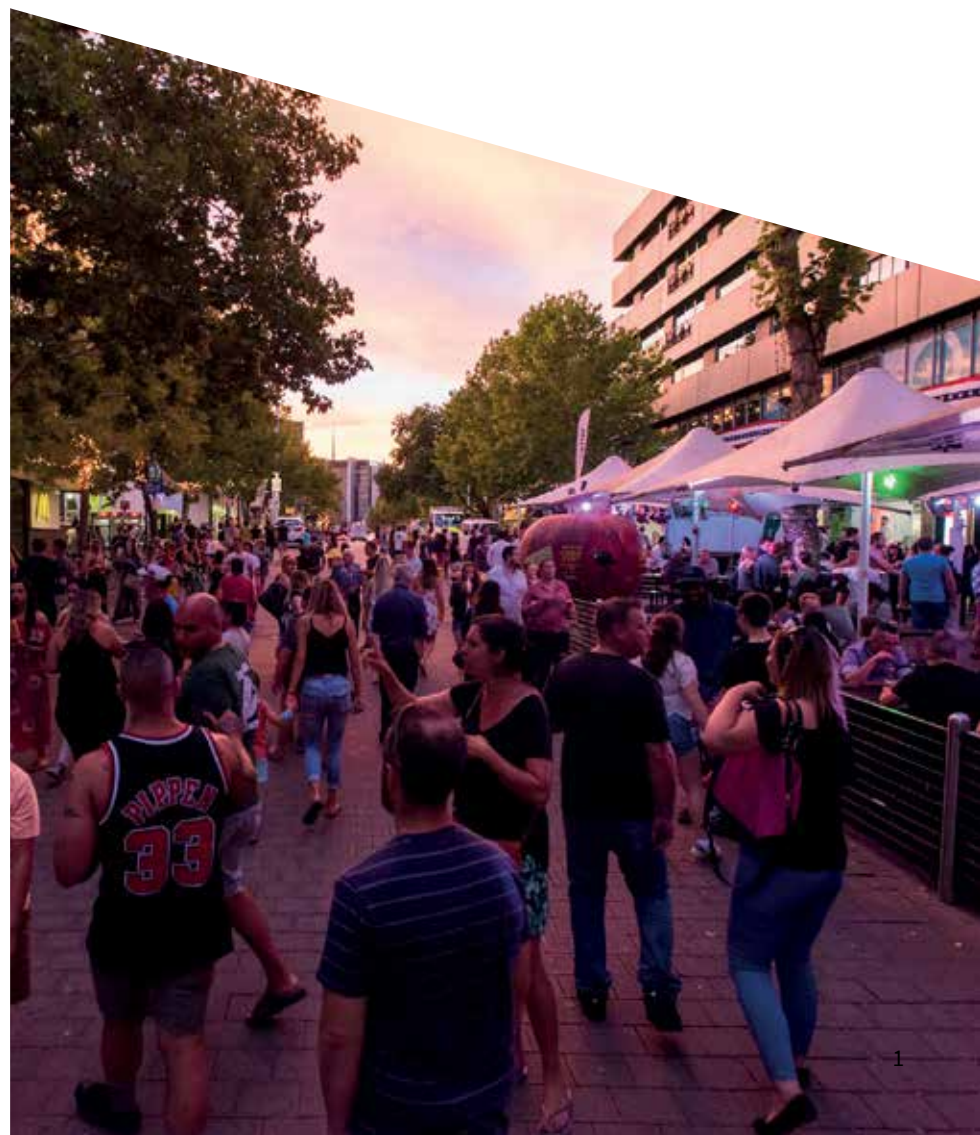


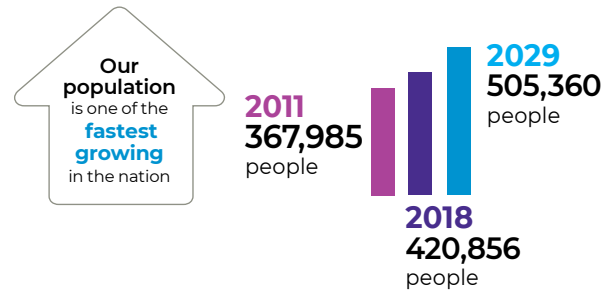


Infrastructure PLAN

Overview



BUILDING CANBERRA'S FUTURE



As Canberra grows toward a population of 500,000 by 2029, the ACT Government will invest in infrastructure that will ensure our city remains one of the world's most liveable.

We are taking a long-term view of our community's needs and delivering the physical, social and digital infrastructure necessary to meet them.

The Infrastructure Plan is a blueprint that will shape the city's development. It outlines \$14 billion of new and upgraded infrastructure that will support economic growth and provide the services Canberrans will need in the years to come.

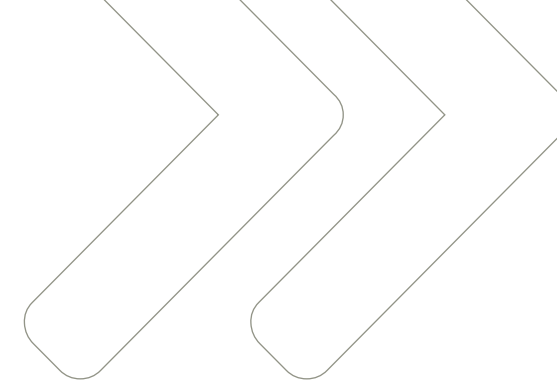
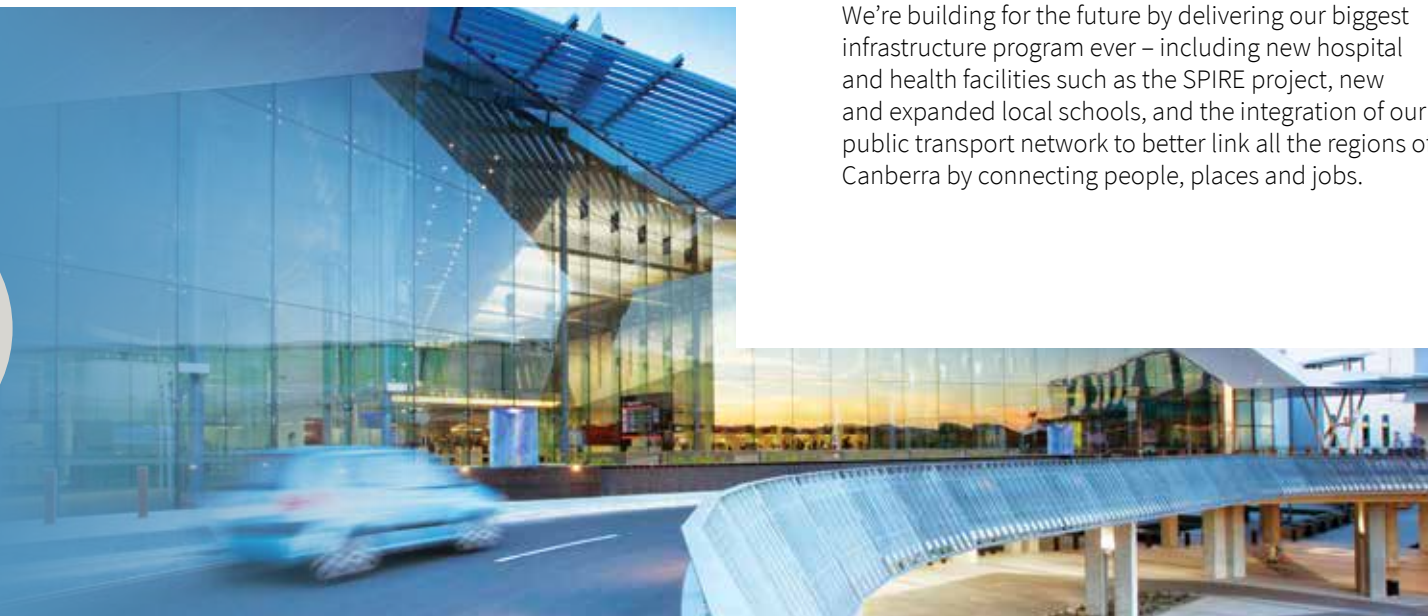
The Plan focusses on the priorities that matter most: health, education, transport and community services.

We're building for the future by delivering our biggest infrastructure program ever – including new hospital and health facilities such as the SPIRE project, new and expanded local schools, and the integration of our public transport network to better link all the regions of Canberra by connecting people, places and jobs.

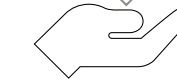
A strong investment in our future

\$14 billion infrastructure blueprint in the areas that matter most

With **\$3 billion** worth of infrastructure spending **already committed**



The plan is **not just about new infrastructure**, but **maintaining & upgrading** what's already there



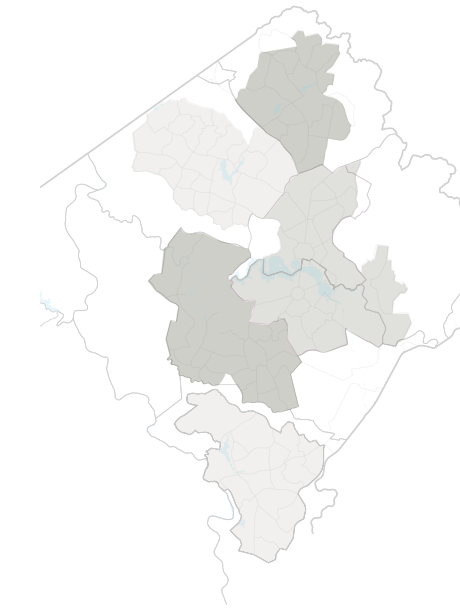
Infrastructure across our regions

The infrastructure plan will deliver for all Canberrans, no matter where they live.

As Canberra's population grows, this naturally creates additional demand for infrastructure and services.

The focus of our new investment will shift to the new development fronts in Molonglo and West Belconnen, as well as supporting urban renewal precincts in and around our town centres – and renewing infrastructure reaching the end of its life in the south.

Investment in existing infrastructure will continue and be targeted to the areas of Canberra with ageing facilities to ensure all regions of Canberra continue to have access to great government services and infrastructure.



SECTOR PRIORITIES



Our key priority in shaping the *ACT Infrastructure Plan* is to provide a high standard of service to the community across all sectors: health, education, transport, cultural and recreational facilities, community services, city planning and land release, and city services.



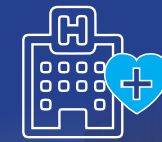
Priorities - the next five years

- › Future-proofing the Canberra Hospital
- › Centenary Hospital for Women and Children
- › Strengthening community-based care
- › Mental health supported accommodation
- › Culturally-appropriate care for Aboriginal and Torres Strait Islander Canberrans

Priorities - longer term

- › Future northside hospital services

Future proofing TCH with SPIRE & expanding **Centenary Hospital for Women and Children**



2 more Walk-in Centres taking the network up to **5 in total** across Canberra



Health

We are delivering essential infrastructure so that Canberrans continue to have access to quality health care when and where they need it.

Investments in healthcare infrastructure make up 20 per cent of the ACT's currently-budgeted capital works program.

Providing the right care, in the right place, at the right time – particularly through community health and primary care – will help keep Canberrans healthy and well while addressing the ongoing growth in demand for hospital services.

Canberra's health care network

Belconnen

- Belconnen Walk-in Centre
- Belconnen Community Health Centre
- Calvary Hospital
- University of Canberra Hospital

Woden, Weston Creek & Molonglo

- Phillip Community Health Centre
- Canberra Hospital
- Weston Creek Walk-in Centre (under construction)**

Gungahlin

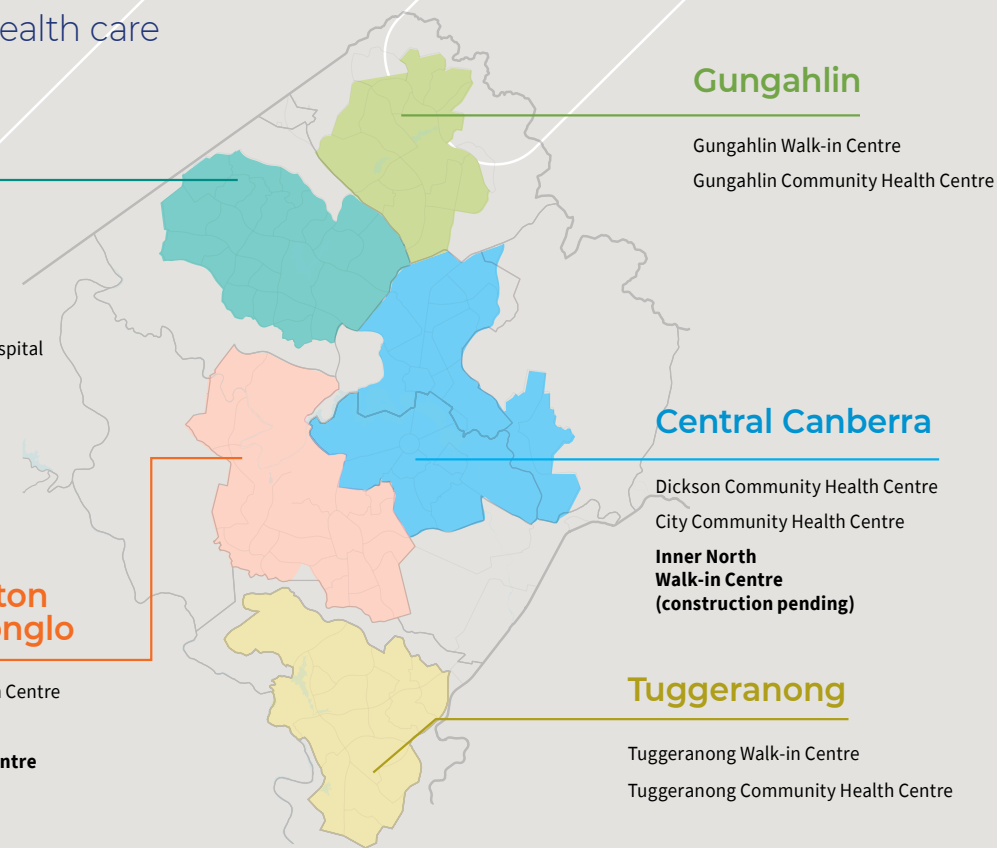
- Gungahlin Walk-in Centre
- Gungahlin Community Health Centre

Central Canberra

- Dickson Community Health Centre
- City Community Health Centre
- Inner North Walk-in Centre (construction pending)**

Tuggeranong

- Tuggeranong Walk-in Centre
- Tuggeranong Community Health Centre





Education

Investing in Canberra's education system means we can support all Canberra students to reach their full potential and maintain our reputation as the knowledge economy of the nation.

The ACT's public education is consistently ranked among the best in Australia. Around 18 per cent of the current four-year capital program is dedicated to delivering education infrastructure.

With around 62 per cent of Canberra students at public schools, we will continue to invest in infrastructure to support our 87 public schools across Canberra as well as to deliver new schools in growth areas.

Canberra's existing government schools

Belconnen

- 1 Early Childhood
- 15 Primary
- 2 Combined
- 3 High
- 2 Colleges
- 1 Specialist

Woden, Weston Creek & Molonglo

- 1 Early Childhood
- 10 Primary
- 2 High
- 1 Colleges
- 1 Specialist

NEW P-6 school in 2021

Gungahlin

- 1 Early Childhood
- 4 Primary
- 3 Combined
- 1 College

Expanding school in mid 2021

NEW P-6 school in 2022

NEW 7-10 school in 2023

Central Canberra

- 2 Early Childhood
- 9 Primary
- 1 Combined
- 3 High
- 2 Colleges
- 2 Specialist

School modernisation in mid 2021

Tuggeranong

- 1 Early Childhood
- 2 Colleges
- 3 Combined
- 2 High
- 12 Primary

More than **26% increase**

in **students attending public schools** since 2010 (from 38,853 to 49,152)

Building **3 new schools & improving the existing 87** across Canberra



Priorities - the next five years

- > New and expanded schools
- > Canberra Institute of Technology campus renewal
- > Higher education campus expansions

Priorities - longer term

- > New and expanded schools



Transport

We're delivering an integrated public transport network for our future, connecting light rail routes with bus services and infrastructure to support walking and cycling.

Investing in **footpaths & cycleways**, making it easier to walk & cycle



Extending Light Rail to Woden



Canberra's Light Rail Network

Stage 3

Belconnen to the City and then onwards to the Airport via the Russell defence precinct

Stage 2a

City to Commonwealth Park

Stage 2b

Commonwealth Park to Woden

Stage 4

Woden to Tuggeranong Centre via Mawson



Priorities - the next five years

- > Light Rail Stage 2 - Continuing light rail from Gungahlin to Woden
- > Faster rail between Canberra and Sydney and stronger freight links
- > Major road duplication and intersection upgrades

Priorities - longer term

- > Future stages of light rail
- > Reducing transport emissions

City services, utilities, waste & recycling



We are continuing to invest in infrastructure that maintains and expands the city's services, such as parks and playgrounds, utilities and waste management.

Priorities

- › Stormwater
- › Electricity and gas
- › Water and waste water
- › Waste
- › Urban forest
- › Community facilities and city amenity

As our city grows, our planning will focus on balancing the need for investment in new suburbs and regions with maintaining and upgrading existing assets in more established suburbs.

The need to mitigate and adapt to the impacts of climate change will also be a significant driver of how, where and when we invest in city services and utilities infrastructure.

Improving our great parks, sportsgrounds, local shops & playgrounds



More trees in our streets to meet our **30% green canopy target** by 2045



Priorities – the next five years

- › A new Canberra Theatre
- › The Kingston Arts Precinct

Priorities – longer term

- › New Canberra Stadium
- › National Convention Centre
- › EPIC



Cultural & recreational facilities

We are delivering facilities that make our city lively and liveable.

Our existing arts and sports facilities are seeing rising demand for space and access. We will keep working to deliver new and upgraded culture and recreation facilities across Canberra.

New recreational facilities will come online in the early 2020s and will help address demand at existing ones, including the Kingston Arts Precinct, the Stromlo Leisure Centre and the Home of Football at Throsby.



Delivering a new Canberra Theatre to provide the same experiences available in other capital cities

Planning the future of the **Canberra Stadium** and **EPIC**





Community services

High quality community services can empower people to meet their full potential, and make our community more inclusive and equitable

Community Services infrastructure is distributed right across Canberra, making services as accessible as possible for vulnerable Canberrans and ensuring rapid response times in emergencies.

As Canberra grows, continued investment will be needed to meet demand for community services. The ACT Government will focus on growth and renewal of public housing and accommodation for homeless Canberrans as well as stepping up investment in Emergency Services infrastructure.



Additional ACT Ambulance Service & ACT Fire and Rescue **service stations** in the city centre & the Molonglo Valley



Priorities – the next five years

- › Growing and renewing public housing
- › Alexander Maconochie Reintegration Centre
- › New emergency services facilities for the City and Molonglo
- › New ACT Civil and Administrative Tribunal (ACAT) facilities



City planning & land release

Good planning combined with a well-considered land release program will deliver a more compact and efficient city that has affordable homes, high quality public places and great transport infrastructure.

Each year the Indicative Land Release Program identifies land that is to be released for residential, mixed use, commercial, industrial and community purposes in response to growth, market conditions and Government priorities. The Government develops land through the Suburban Land Agency and the City Renewal Authority - with some development delivered by the private sector.

As our city matures, it is expected that a significant amount of urban renewal development in the ACT will be led by the private sector on land that is not owned or sold by the Government.

Meeting our commitment of

15% affordable, community & public housing

in the targeted residential land releases



Priorities – the next five years

- › Connecting Molonglo – John Gorton Drive and Molonglo River Bridge crossing
- › Acton Waterfront

Priorities – longer term

- › East Lake



